

MB 16/6 M2 0,37kW (MB161271)

GENERAL DATA



MEDIUM PRESSURE CENTRIFUGAL FAN WITH FORWARD IMPELLER

MANUFACTURING FEATURES:

- Rolling steel sheet housing.
 - Completely joined or welded housing.
 - Galvanised steel sheet simple inlet forward curved impeller.
 - Polyester powder finishing coat.
 - Standard asynchronous squirrel-cage motor with IP-55 protection and Class F insulation.
- Manufactured with standard voltages: 230V 50Hz in single phase motors and 230/400V 50Hz in three phase motors.

- Available positions (to be indicated in case of order): LG270, LG0, LG45, LG90, LG135, LG180, LG225, LG315, RD0, RD45, RD90, RD135, RD180, RD225, RD270, RD315.
- The indicated codes correspond to the model in position LG270

APPLICATIONS:

Designed for inline installation, they are suitable for:

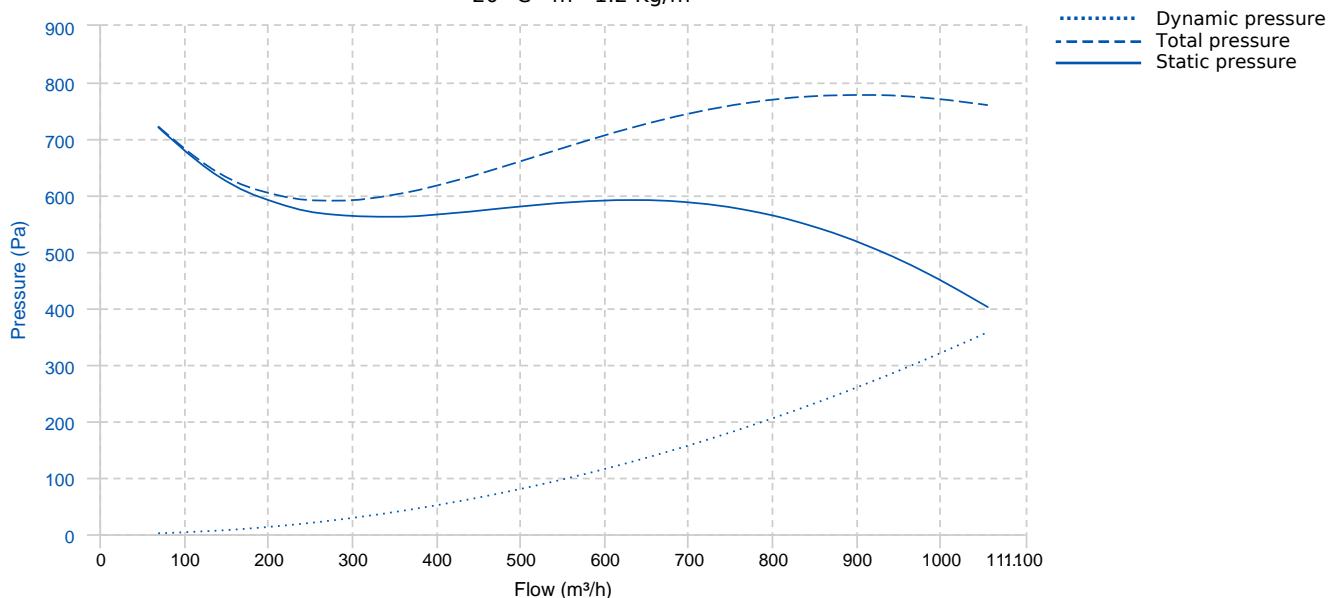
- Industrial applications, extraction or injection of air.
- Cooling of machines and parts.
- Suitable for transporting totally clean air without dust.
- Maximum working temperature: carried air: 130°C, environment single phase 50°C, three phase 60°C.

UNDER REQUEST:

- Special voltages.
- 2 speed motors (three phase motors).
- Fan for air working temperatures up to 250°C.
- Fans provided with cooling disk for high temperature.
- Option with support for models where it is not included, and without support for models where it is included.

PERFORMANCE CURVE

20 °C - m - 1.2 Kg/m³

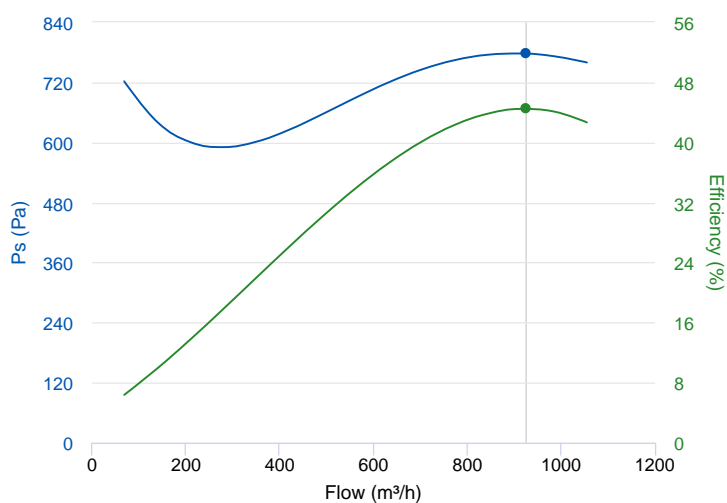


TECHNICAL DATA

Fan							
RPM	2858	Approx. weight	9.5 kg	Max. Flow	1050 m³/h		
Motor							
Power	0,37 kW	RPM	2858	Capacitor	12µF 450V	I max. (230V)	2,47 A
Size	71	Approx. weight	5.7 kg	Efficiency (%)	IE2 %		

ERP DATA

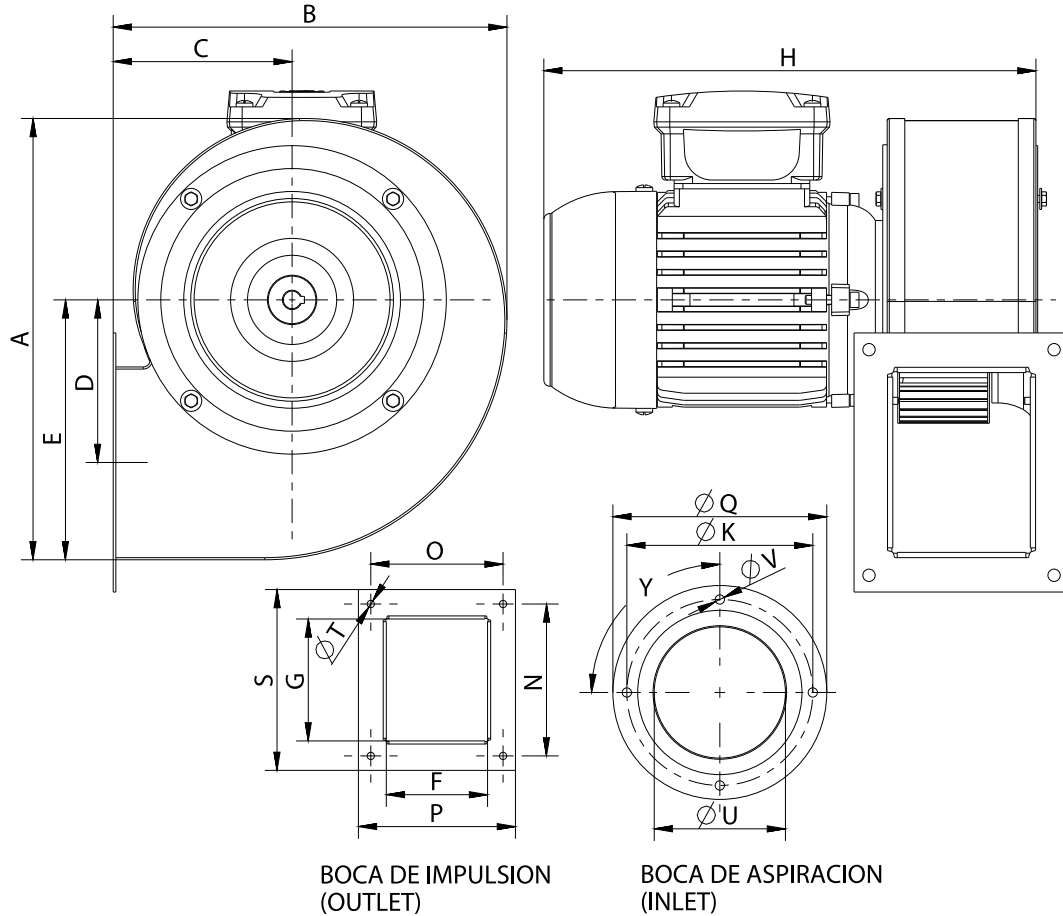
Fan data sheet		
Fan type	Ventilator centrifugal cu pale drepte sau curbate spre inainte.	
Installation category	B_2026:	
Efficiency category	Total	
The fan has to be installed with VF	No	
Motor power (kW)	0.37	
	Fan values	ERP Requirements 2027
Max. efficiency (%)	44.48	42.88
Efficiency grade (N)	58.6	57
Pabs (kW)	0.452	
Flow (m³/h)	925.67	
Total pressure (Pa)	777.59	
Speed (m/s)	2858	



Fan values	ERP Requirements 2027
------------	-----------------------

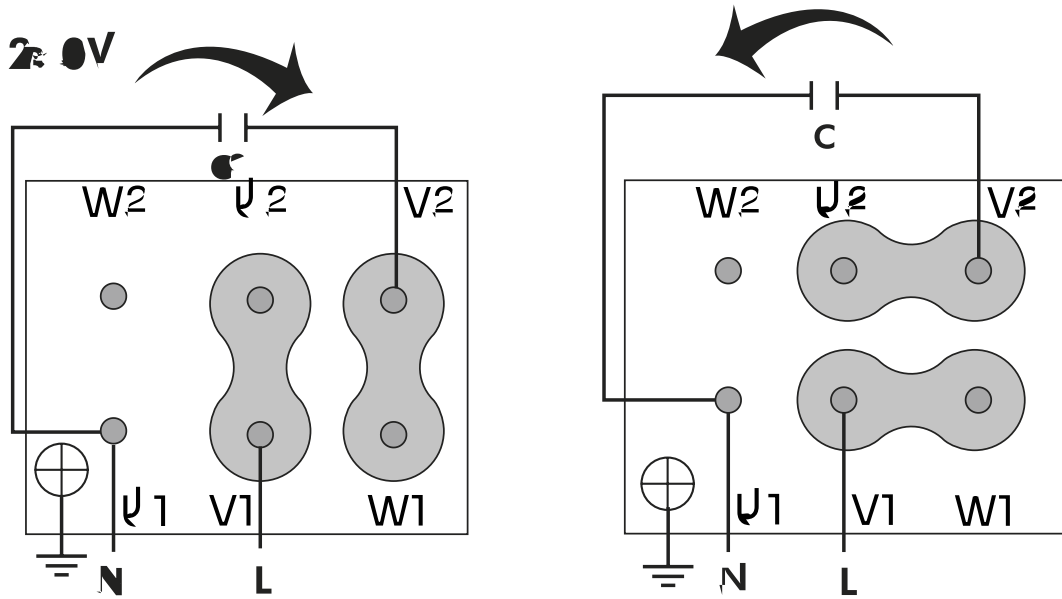
Specific ratio	1.00
----------------	------

DIMENSIONS

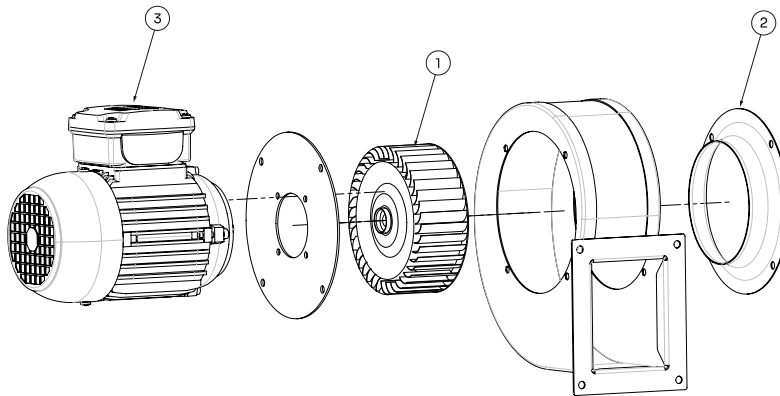


Dimensions (mm)									
A	295	B	266	C	119	D	108,5	E	171,5
F	98	G	118	H	325	K	180	N	147
O	128	P	152	Q	207	S	175	TØ	7
UØ	127	VØ	9	Y	4x90°				

WIRING DIAGRAM



SPARE PARTS



	Code	Model	Qty
3	720301036	MOTOR 0,37kW M2 B14 230V	x1